

# Into the Woods



*Fabrics by Jamie Kalvestran*



**makower uk**

1384 Broadway  
New York, NY 10018  
(800) 223-5678

[www.andoverfabrics.com](http://www.andoverfabrics.com)

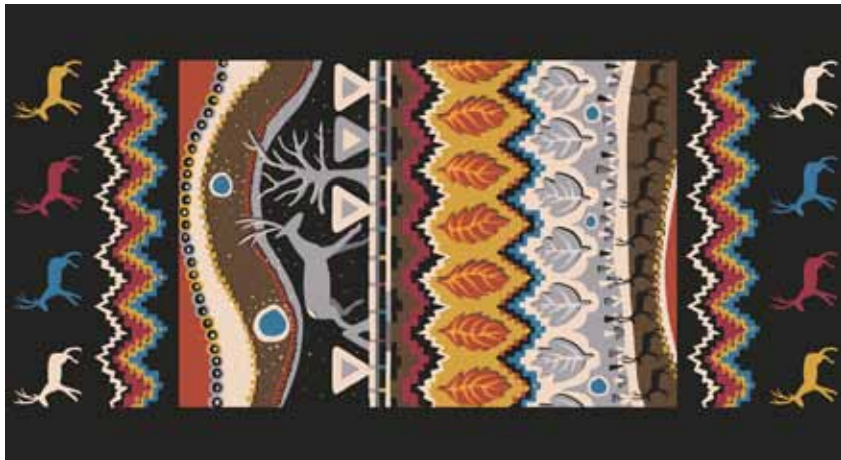
Quilt designed by Jamie Kalvestran

Finished size: 84" x 108"

6/12/12

# Into the Woods

*Fabrics by*  
Jamie Kalvestran

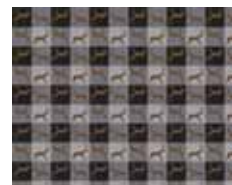


5963-K 1 panel (2/3 yd)



5964-K 7 1/2 yds (backing)

Bolts needed to cut project kits			
	10 kits	20 kits	30 kits
5963-K	1	1	2
5965-KR	2	3	4
5966-KO	3	6	8
5966-KY	1	1	2
5968-K	2	3	4
5968-KO	1	2	3
5968-KR	1	2	3
5969-KO	1	1	2
5969-KY	1	1	2
5970-KB	1	1	1
5970-KR	1	1	1
*5964-K	5	10	15
<i>*Yardage needed for backing (7 1/2 yards per kit)</i>			



5967-K



5967-KY



5965-KR 1 3/4 yds



5965-K



5968-KO 1 1/2 yds



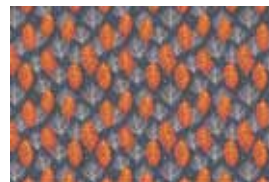
5968-KR 1 1/2 yds



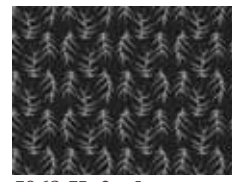
5966-KO 4 yds



5966-KY 3/4 yd



5966-K



5968-K 2 yds  
(includes binding)



5968-KB



5969-KO 3/4 yd



5969-KY 5/8 yd



5969-K



5970-KB 1/2 yd



5970-KR 1/2 yd



5970-KN



5970-KY



makower uk®

1384 Broadway  
New York, NY 10018  
(800) 223-5678

www.andoverfabrics.com

*Fabrics shown are  
10% of actual size.*

*Fabrics used in quilt  
pattern are indicated in red.*